

Monocrystalline Solar Module

575W-590W Mono

182MM Cell 156 Half-cell Layout

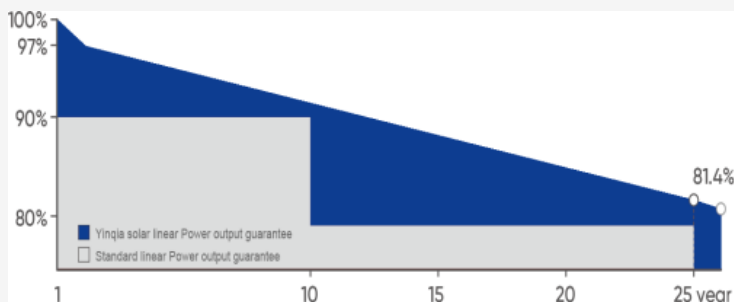
黄山银洽新能源 YinQia SOLAR

Features

- ◆ High cell efficiency with quality silicon material for long term output stability and reliability
- ◆ Rigorous quality control to meet highest international standards
- ◆ High transmittance low iron tempered glass with enhanced Stiffness and impact resistance
- ◆ Unique frame design with high mechanical strength for easy installation
- ◆ Advanced encapsulation material with multi-layer sheet lamination to provide efficient protection from the severest environmental conditions
- ◆ Outstanding electrical performance under high temperature and low irradiance conditions

Applications

- ◆ Any large or small on-grid or off-grid solar power stations
- ◆ Commercial and industrial building roof-top systems
- ◆ Residential roof-top systems
- ◆ Any commercial or industrial ground mount systems
- ◆ Other industrial or commercial applications



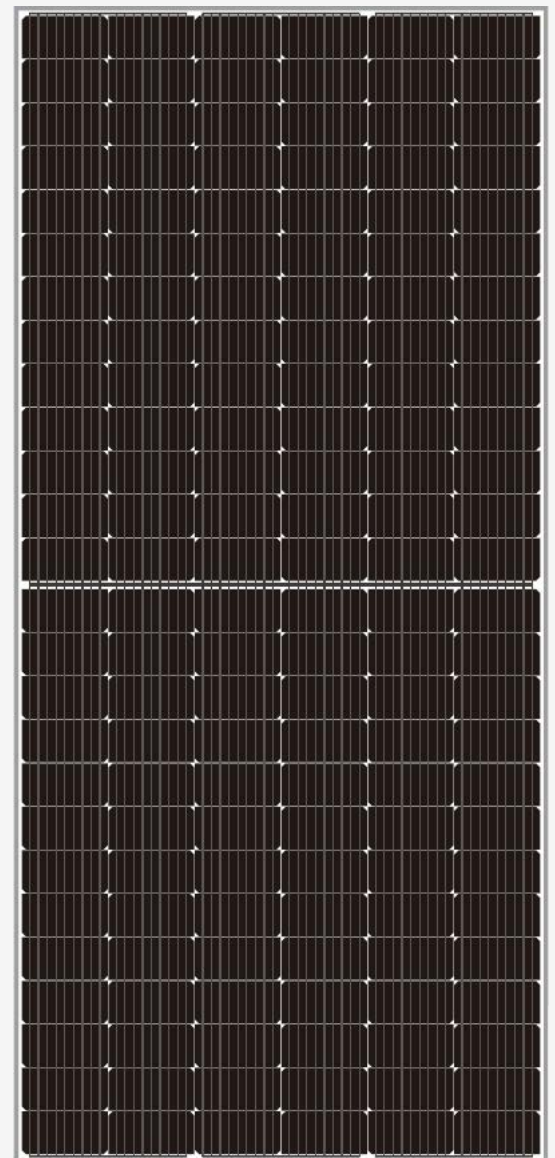
Linear performance Warranty

12
YEARS

Quality
Warranty

25
YEARS

Power
Warranty



- . ISO9001:2015QMS
- . ISO14001:2015EMS
- . ISO45001:2018OHSMS
- . IEC/EN 61215, IEC/EN 61730 Standard

HUANGSHAN YINQIA NEW ENERGY TECHNOLOGY CO.,LTD.

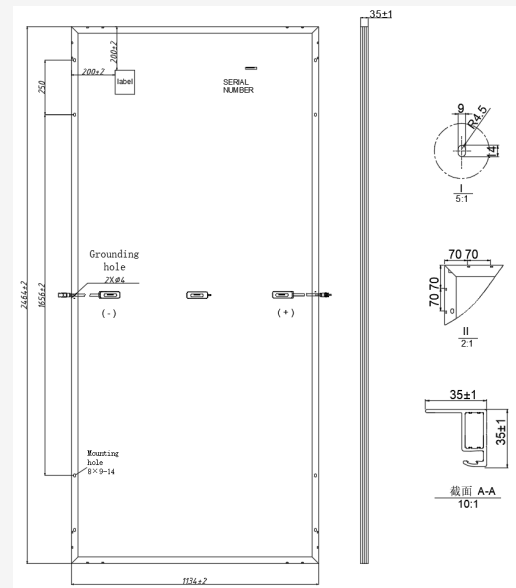
ADD: YANGXI ROAD, HUANGSHAN INDUSTRIAL PARK, HUANGSHAN REGION, HUANGSHAN, ANHUI, CHINA

TEL: +86 559 8515292 | FAX: +86 559 8515296 | sales@yinqiasolar.com

www.yinqiasolar.com

MECHANICAL CHARACTERISTICS

Solar Cells	Mono
NO.of Cells	156(6×26)
Dimensions	2464×1134×35mm
Weight	31kg
Front Glass	3.2mm coated tempered glass
Frame	Anodized aluminium alloy
Junction Box	Ip68 rated(3 by pass diodes)
Output Cables	4.0mm ² 300mm Length can be customized
Connectors	Mc4 compatible
Mechanical load test	5400Pa



ELECTRICAL PARAMETERS

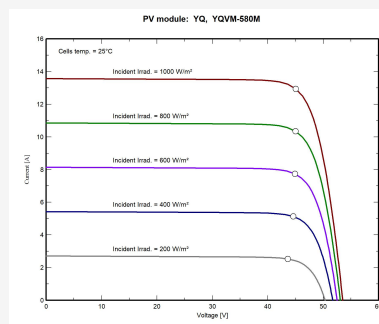
POWER CLASS	YQVM-575M		YQVM-580M		YQVM-585M		YQVM-590M	
	STC	NOCT	STC	NOCT	STC	NOCT	STC	NOCT
Maximum power (Pmax)	575W	430W	580W	434W	585W	438W	590W	442W
Open Circuit Voltage (Voc)	53.37V	49.06V	53.52V	49.21V	53.67V	40.36V	53.82V	49.51V
Short Circuit Current (Isc)	13.48A	11.24A	13.56A	11.33A	13.64A	11.38A	13.72A	11.44A
Voltage at Maximum power (Vmpp)	44.17V	40.65V	44.32V	40.8V	44.47V	40.95V	44.62V	41.1V
Current Maximum Power (Impp)	13.03A	10.59A	13.1A	10.65A	13.17A	10.71A	13.23A	10.77A
MODULE EFFICIENCY (%)	20.6		20.8		20.9		21.1	

STC:Irradiance 1000W/m²,cell temperature 25°C,AM 1.5G NOCT:Irradiance 800W/m²,ambient temperature 20°C,wind speed 1m/s,AM 1.5G

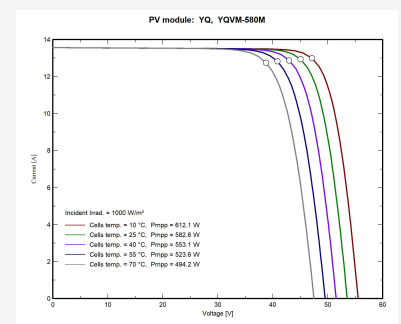
PACKING CONFIGURATION

Container	20'GP	40'HQ
Pieces per pallet	31	31+31
Pallets per container	8	9
Pieces per container	248	558
Dimension/Pallet	1214×1138 mm	2530×1138 mm
Gross weight/pallet	983Kg	1970Kg

I-V CURVE



YQVM-580M/I-V



OPERATING CHARACTERISTICS

Operating Module Temperature	-40°C to +85°C
Maximum System Voltage	1500 DC (IEC)
Maximum Series Fuse Rating	20A
Power Tolerance	0/+5W

TEMPERATURE CHARACTERISTICS

Nominal Operating Temperature (NOCT)	45±2°C
Temperature Coefficient of Pmax	-0.36%°C
Temperature Coefficient of Voc	-0.28%°C
Temperature Coefficient of Isc	+0.05%°C

Note: Due to continuous technical innovation, R&D and improvement, technical data above mentioned may be of modification accordingly. YQ SOLAR have the sole right to make such modification at anytime without further notice.